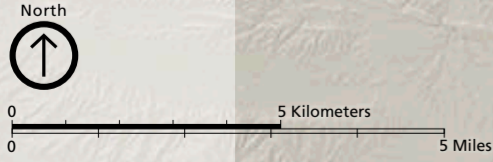


DINOSAUR NATIONAL MONUMENT

Dinosaur fossils can be seen only at the Quarry Exhibit Hall area. No camping allowed on Harpers Corner Road.

Harpers Corner Road closed to cars at Plug Hat Butte during winter.

Yampa Bench Road warning—high-clearance vehicles advised; impassable when wet.



- Paved road
 - Unpaved road
 - Unpaved road (high-clearance vehicles advised)
 - Distance indicator
 - Trail
 - Rapids
 - Ranger station
 - Picnic area
 - Nature trail
 - Star gazing
 - Wheelchair-accessible
 - Campground (water available summer only)
 - Primitive campground
 - River/backcountry campsite (permit required)
- Many unpaved roads are impassable when wet. Check conditions.



Canyon Visitor Center
Open seasonally

Quarry Exhibit Hall
Dinosaur fossils
Restricted access road SHUTTLES ONLY
Quarry Visitor Center
Parking and SHUTTLE PICKUP

To Rangely, Grand Junction, and 70

To Rangely

To Maybell
24mi 39km
To Denver
320mi 515km

To 260 from
Deerlodge Park
17mi 27km