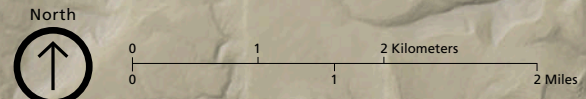


CUSTER STATE PARK

WIND CAVE NATIONAL PARK

BLACK HILLS NATIONAL FOREST

- Information
- Parking
- Picnic area
- Restrooms
- Amphitheater
- Campground
- NPS boundary
- Hiking trail
- Unpaved road
- Pullout



To Custer and Mount Rushmore National Memorial

To Custer, Jewel Cave National Monument, and Mount Rushmore National Memorial

To Rapid City

To Hot Springs

Mile Marker 35 on 79