



# McInnis Canyons National Conservation Area Travel System

All Motorized and Bicycle Travel is Limited To Designated Routes!



**Land Ownership and Administration**

- MCNCA Boundary
- Black Ridge Canyons Wilderness
- Bureau of Land Management
- Private
- State Wildlife Areas
- State Land
- Colorado National Monument
- Areas Limited to Day Use Only

**Route Designations**

- Foot Only
- Foot and Horse
- Bicycle and Foot Only
- Bicycle, Horse, Foot
- Motorcycle
- ATV (50 inches or less)
- Full Size Vehicles
- County Maintained Roads
- Kokopelli Trail

**Open To:**

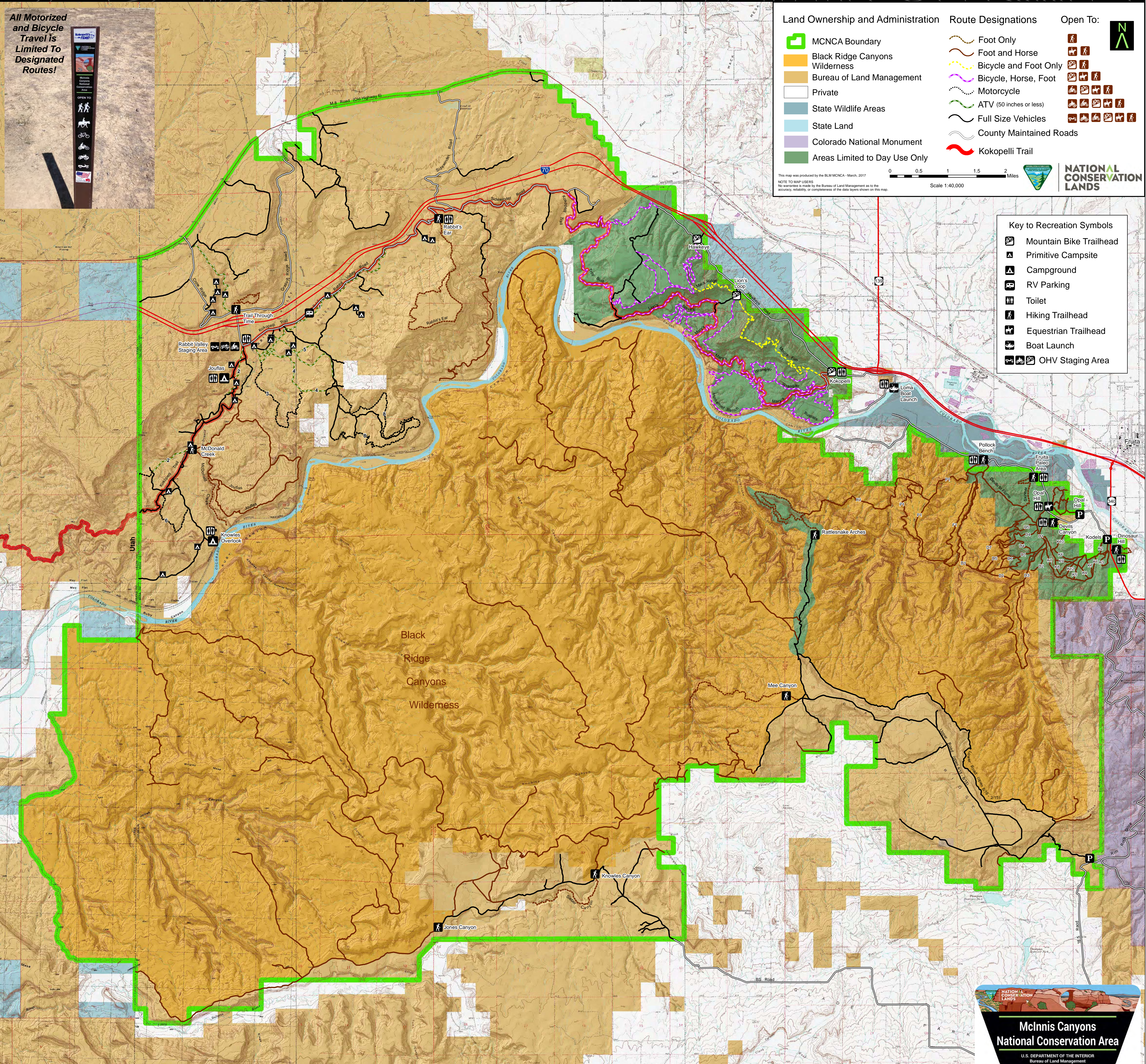
- Hiking
- Equestrian
- Motorcycle
- ATV
- Full Size Vehicle
- OHV

This map was produced by the BLM/MCNCA - March, 2017  
NOTE TO MAP USERS: No warranty is made by the Bureau of Land Management as to the accuracy, reliability, or completeness of the data layers shown on this map.

Scale 1:40,000

**Key to Recreation Symbols**

- Mountain Bike Trailhead
- Primitive Campsite
- Campground
- RV Parking
- Toilet
- Hiking Trailhead
- Equestrian Trailhead
- Boat Launch
- OHV Staging Area



**McInnis Canyons National Conservation Area**  
U.S. DEPARTMENT OF THE INTERIOR  
Bureau of Land Management