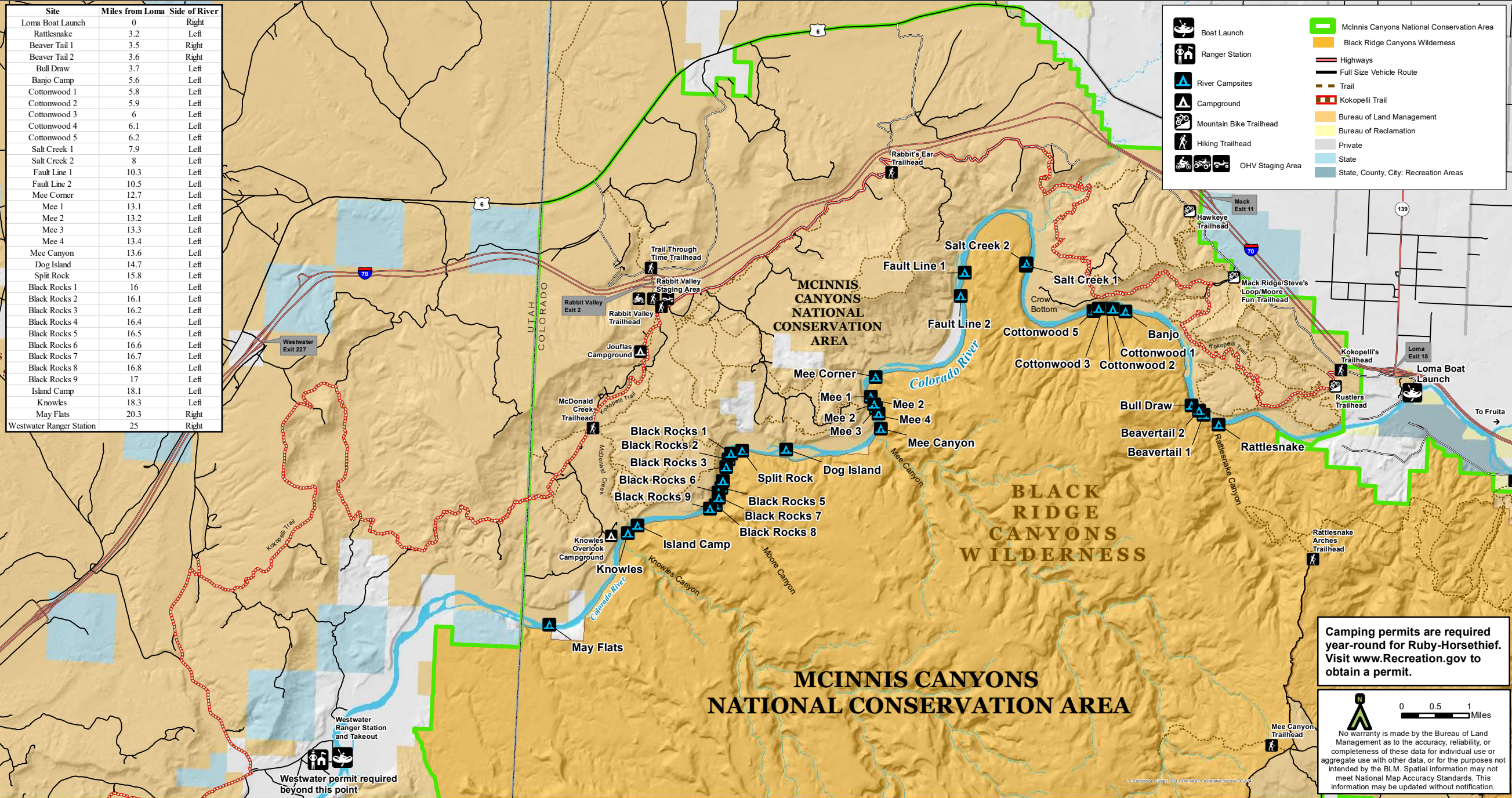




Ruby-Horsethief Canyons - Colorado River Campsites

Site	Miles from Loma	Side of River
Loma Boat Launch	0	Right
Rattlesnake	3.2	Left
Beaver Tail 1	3.5	Right
Beaver Tail 2	3.6	Right
Bull Draw	3.7	Left
Banjo Camp	5.6	Left
Cottonwood 1	5.8	Left
Cottonwood 2	5.9	Left
Cottonwood 3	6	Left
Cottonwood 4	6.1	Left
Cottonwood 5	6.2	Left
Salt Creek 1	7.9	Left
Salt Creek 2	8	Left
Fault Line 1	10.3	Left
Fault Line 2	10.5	Left
Mee Corner	12.7	Left
Mee 1	13.1	Left
Mee 2	13.2	Left
Mee 3	13.3	Left
Mee 4	13.4	Left
Mee Canyon	13.6	Left
Dog Island	14.7	Left
Split Rock	15.8	Left
Black Rocks 1	16	Left
Black Rocks 2	16.1	Left
Black Rocks 3	16.2	Left
Black Rocks 4	16.4	Left
Black Rocks 5	16.5	Left
Black Rocks 6	16.6	Left
Black Rocks 7	16.7	Left
Black Rocks 8	16.8	Left
Black Rocks 9	17	Left
Island Camp	18.1	Left
Knowles	18.3	Left
May Flats	20.3	Right
Westwater Ranger Station	25	Right



- Boat Launch
- Ranger Station
- River Campsites
- Campground
- Mountain Bike Trailhead
- Hiking Trailhead
- OHV Staging Area
- McInnis Canyons National Conservation Area
- Black Ridge Canyons Wilderness
- Highways
- Full Size Vehicle Route
- Trail
- Kokopelli Trail
- Bureau of Land Management
- Bureau of Reclamation
- Private
- State
- State, County, City: Recreation Areas

Camping permits are required year-round for Ruby-Horsethief. Visit [www.Recreation.gov](http://www.Recreation.gov) to obtain a permit.

0 0.5 1 Miles

No warranty is made by the Bureau of Land Management as to the accuracy, reliability, or completeness of these data for individual use or aggregate use with other data, or for the purposes not intended by the BLM. Spatial information may not meet National Map Accuracy Standards. This information may be updated without notification.

Westwater permit required beyond this point