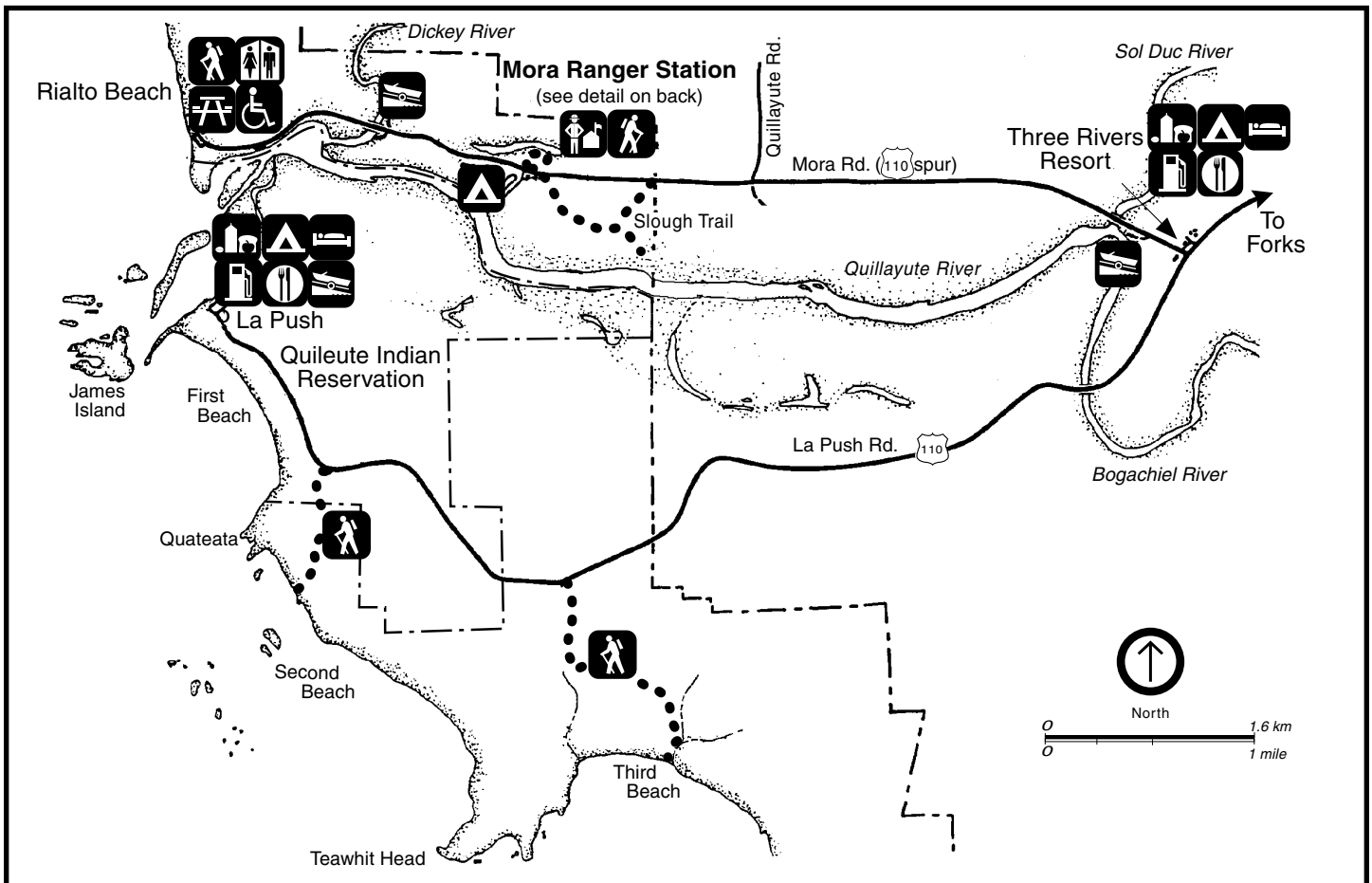


# Olympic



Olympic National Park

## Mora / La Push Area



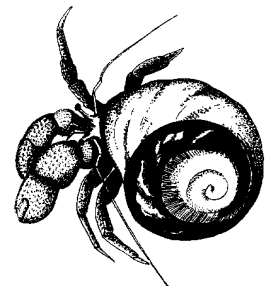
## The Wild Coast

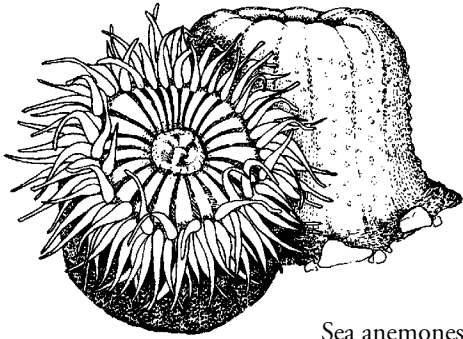
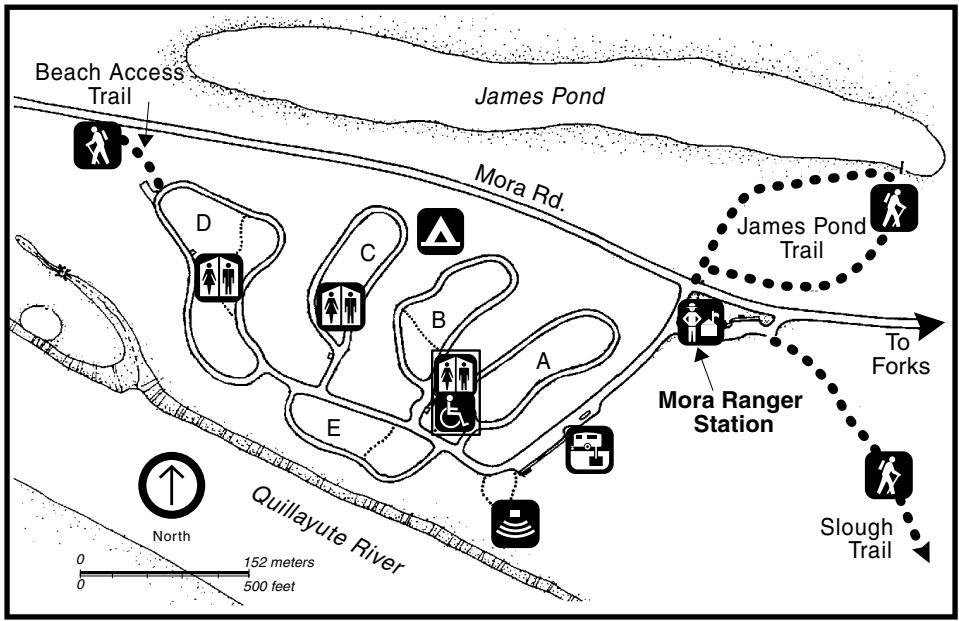
Olympic National Park protects one of the longest stretches of wilderness coast in the lower 48 states. Sea lions, seals, otters, whales, sea birds, and eagles are at home in this landscape of towering headlands and sea stacks.

A treacherous shoreline and rough seas likely helped preserve the coast. Added protection came in 1988, when Congress designated much of the park the "Olympic Wilderness." The unbroken coast stretching between fishing villages of local tribes appears as it must have when their ancestors paddled cedar canoes past rocky coves, islands and beaches.

## Mora Area Information

- Facilities:** Mora Ranger Station, open intermittently in summer with information, book/map sales, and bear canisters. Wilderness camping permits year-round. Restrooms (accessible) available at Rialto Beach or the campground.
- Camping:** Open year-round, first-come, first-served, 94 sites, one accessible, fire rings with grates, accessible restrooms, water, animal-proof food storage, RV dump station (fee).
- Picnic Area:** Rialto Beach: paved, several tables with table extensions.
- Boat Launch:** Dickey River Boat Ramp
- Regulations:** Pets are not allowed on the wilderness coast beaches or on any park trails. Pets are allowed on Rialto Beach to Ellen Creek only and must be on a leash at all times.





Sea anemones

**Mora Area Trails:**

- James Pond Trail:** .3 mile loop Flat trail through forest to James Pond.
- Slough Trail:** .9 mile Forested trail to the Quillayute River. Elevation changes less than 40 feet.
- Rialto Beach:** 200 feet Accessible path to view beach and islands (driftwood and cobbles permitting).
- North Coast Wilderness:** 20.6 miles Walk 1.5 miles to an arch and tidepools at Hole-in-the-Wall. Check tide tables and use extreme caution if backpacking north to Sandpoint (quota area). Wilderness permits and hard-sided food containers required for backpackers.

**La Push Area Trails:**

- Second Beach:** .7 mile Trailhead is 14 miles west of US 101 on the La Push Road on the Quileute Indian Reservation. Trail winds through forest before descending 200 feet to a sandy beach with seaweeds and tidepools.
- Third Beach:** 1.4 miles Trailhead is on the La Push Road, 12 miles west of US 101. Trail descends 270 feet through forest to a sandy beach.
- South Coast Wilderness:** 17.1 miles Third Beach to Oil City. Wilderness camping permits and hard-sided food storage containers are required for backpackers.

**All the Water's a Stage**

Severe currents, rocks and infamous weather doomed many ships along this wild coast. Shipwrecked mariners told of hardships endured on the rugged and desolate shoreline, and of dramatic rescues, some involving heroic assistance from local tribes. Memorials north of Rialto Beach commemorate 36 people who died in wrecks of Chilean and Norwegian vessels in 1920 and 1903; testament to a perilous, remorseless sea that has taken many lives.

This coast has seen drama, tragedy and heroism. Shipwrecks stir our emotions and capture the essence of the human struggle against the elements. Even today, with modern navigation and powerful engines, ships have trouble. Accidents have spilled thousands of gallons of oil onto these pristine beaches, killing sea birds and coating rocks and sand. The drama and tragedy continue.

