

transportation

Efficient public transit, miles of bike lanes and short, pedestrian-friendly city blocks make navigating Portland a breeze. The MAX Light Rail system runs directly from Portland International Airport to downtown and the convention center. Add in a modern streetcar, accessible bike-share and walkable bridges, and you'll find you don't need a car when visiting Portland.



TRANSIT INFORMATION
trimet.org

culture

Culture in Portland encompasses every kind of art, live music at unique venues, vibrant nightlife and a festival for pretty much every week. Diverse cultural communities create connection and welcome visitors. Whatever your interest, in Portland, you can be part of the scene. Visit travelportland.com/events to see what's happening when you're in town.



PHOTO BY JACOB HANAUER/UNSPASH.COM

food & drink



PHOTO BY DAVID ALVARADO



From food carts to year-round farmers' markets and award-winning restaurants, Portland is a culinary haven for foodies of all flavors. Chefs make the most of the fertile farmland that surrounds the city, often letting the week's market hauls dictate their menus. That dedication to local ingredients also prevails at Portland's 70+ microbreweries, as well as our wineries, distilleries and coffee roasters.

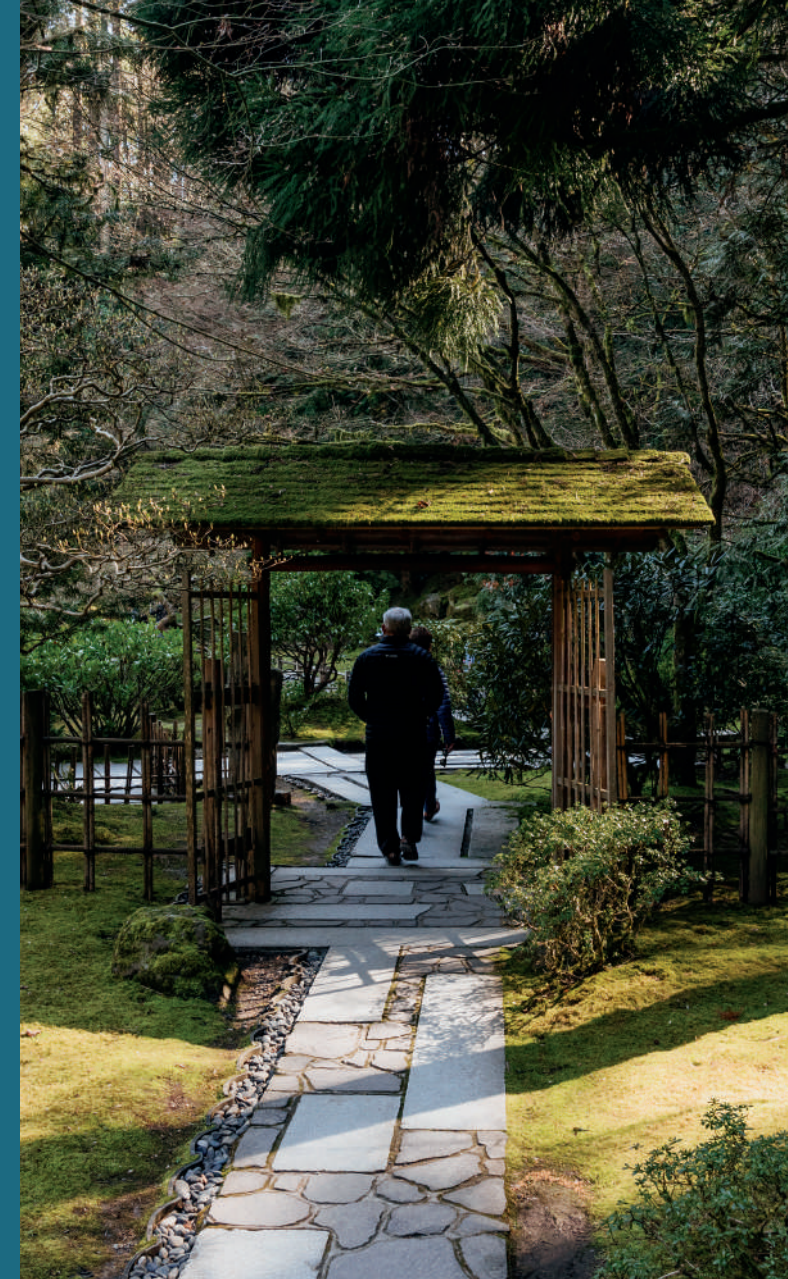


PHOTO BY DAVID ALVARADO

Scan for the latest information.



FOLLOW @TRAVELPORTLAND ON SOCIAL MEDIA



neighbor-hoods



Many of Portland's best places to eat, drink, shop and hang out like locals are found beyond the central-city scope of this map. For a true Portland experience, get out into the neighborhoods! Some favorites include Mississippi, Williams and St. Johns (North Portland); Alberta Arts District, Hollywood and Cully (Northeast); and Hawthorne, Division/Clinton and the Jade District (Southeast).

the region



Portland is the perfect launchpad for adventure, with the rugged Oregon Coast, snow-capped Mount Hood, lush wine country and waterfall-filled Columbia River Gorge all within easy driving distance.

tualatinvalley.org columbiacountyor.gov
mthoodterritory.com greshamchamber.org

shopping & makers



PHOTO BY DAVID ALVARADO

With no sales tax in sight, Portland is a shopper's paradise. Explore the city's vibrant maker scene and take home a made-in-Portland souvenir; go treasure hunting at one of our many thrift stores or vintage clothing shops; or spruce up your style with iconic Portland-based brands like Nike, Pendleton and Danner.

PORTLAND

MAP & GUIDE



COVER PHOTOS BY
CLOCKWISE FROM TOP LEFT: SAMANTHA LORETTI/UNSPASH; ZACK SPEAR/UNSPASH; CELESTE NOCHIE; STUART MULLENBERG; ESB PROFESSIONAL/SHUTTERSTOCK; COLE KEISTER/UNSPASH

central city



1. Japanese American Museum of Oregon

This institution focuses on preserving and sharing the history and culture of the Japanese American community in Portland's Old Town neighborhood. *411 NW Flanders St.*

2. Lan Su Chinese Garden

This authentic Ming Dynasty style garden offers a peaceful escape, filling an entire block in the historic Chinatown district with art, architecture, design and nature. *239 NW Everett St.*

3. Oregon Jewish Museum

This museum on the North Park Blocks interprets the Oregon Jewish experience, explores the lessons of the Holocaust and fosters intercultural conversations. *724 NW Davis St.*

4. Powell's City of Books

Occupying an entire city block, the world's largest new and used bookstore offers over 1 million books, frequent author events and a coffee shop. *1005 W Burnside St.*

5. Portland Chinatown Museum

Opened in 2018, Oregon's first museum to celebrate Chinese American history, art and culture tells the stories of Portland's historic Old Town Chinatown. *127 NW Third Ave.*

6. Portland Saturday Market

The nation's largest arts-and-crafts fair has been a beloved Portland tradition since 1974, operating on the riverfront from March–December. *2 SW Naito Pkwy.*

7. Portland Art Museum

The Pacific Northwest's oldest museum includes an outdoor sculpture court; permanent galleries with Native American, Asian, European and American art; and special exhibitions. *1219 SW Park Ave.*

8. Portland's Center for the Arts

This arts venue collective offers more than 1,000 music, theater, dance and lecture performances each year. Its venues include the historic Arlene Schnitzer Concert Hall, Keller Auditorium and the Newmark Theatre. *portland5.com*

9. Oregon Historical Society

This museum features original and traveling exhibitions telling stories of the people, places and events that have shaped Oregon and American history. *1200 SW Park Ave.*

10. OMSI

Hundreds of interactive exhibits and displays, plus a planetarium and a submarine bring science to life at the family-friendly Oregon Museum of Science and Industry (OMSI). *1945 SE Water Ave.*

MAP KEY

- MAX Blue Line (Hillsboro/Gresham)
- MAX Green Line (Clackamas/PSU)
- MAX Red Line (Airport/Beaverton)
- MAX Orange Line (Portland/Milwaukie)
- MAX Yellow Line (Expo Center/PSU)
- Portland Streetcar NS Line
- Portland Streetcar A Loop
- Portland Streetcar B Loop
- Food carts

Washington Park

Located 15 minutes from downtown by bus or light rail, 400-acre Washington Park features the International Rose Test Garden, Portland Japanese Garden, Oregon Zoo and Hoyt Arboretum. A free shuttle runs daily year-round, looping the park and stopping at all the major attractions. explorewashingtonpark.org

